

**Fogarty International Center  
NIH/Fogarty International Center  
Support to Build Research Capacity**

Jeanne McDermott  
Div of Training & Research  
Fogarty International Center, NIH





---

---

---

---

---

---

---

---

**Outline**

- FIC within NIH
- Strategic Plan
- Research and Research Training Programs in context of Strategic Plan
- Q&A

---

---

---

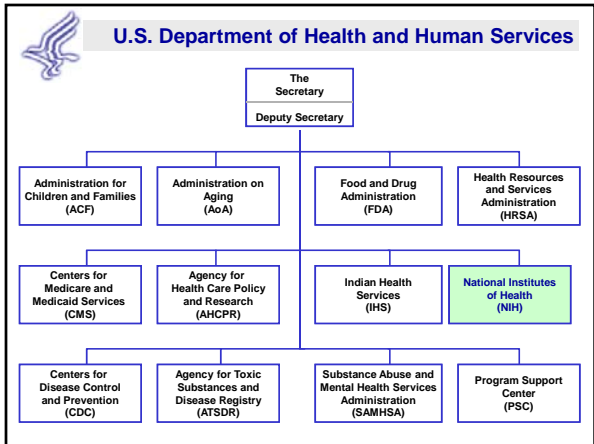
---

---

---

---

---




---

---

---

---

---

---

---

---




---

---

---

---

---

---

---

---

---

---

---

**FIC: "Science for Global Health"**

- **Research and Research Training Grants**
- **Focus in low-and middle income countries**
- **Expect collaborations & partnerships**
- **Emphasis on institutions**
- **Strong NIH partnerships**
- **RT-On-going collaborative research platform**
- **RT-Variety of training for wide range of professionals**

---

---

---

---

---

---

---

---

---

---

---

**Fogarty International Center Approach to Strengthening Research Capacity**

**EFFECT**

- Re-enforces individual & institutional partnerships; mutual reinforcement, empowerment & mutual respect
- Reduces brain drain by strengthening local capacity; fosters long-term mentoring
- Responds to local needs & priorities; flexible; encourages networking & leveraging

---

---

---

---

---

---

---

---

---

---

---

### Pathways to Global Health Research FIC Strategic Plan: 2008-2012

1. Mobilize the scientific community to address the shifting global burden of disease and disability.
2. Bridge the training gap in implementation research
3. Develop human capital to meet global health challenges
4. Foster a sustainable research environment in low- and middle-income countries.
5. Build strategic alliances and partnerships in global health research and training.




---

---

---

---

---

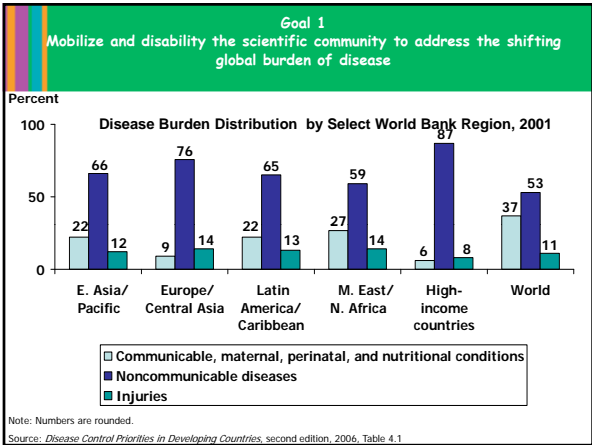
---

---

---

---

---




---

---

---

---

---

---

---

---

---

---

### Research and Research Training Programs

- Brain Disorders in the Developing World
- International Tobacco & Health Research & Capacity building

**Research Training**

- HIV-related
- Non HIV Infectious Disease
- Population Health
- Trauma and Injury
- Environmental & Occupational Health
- Chronic, Non-Communicable Diseases and Disorders Across the Lifespan

---

---

---

---

---

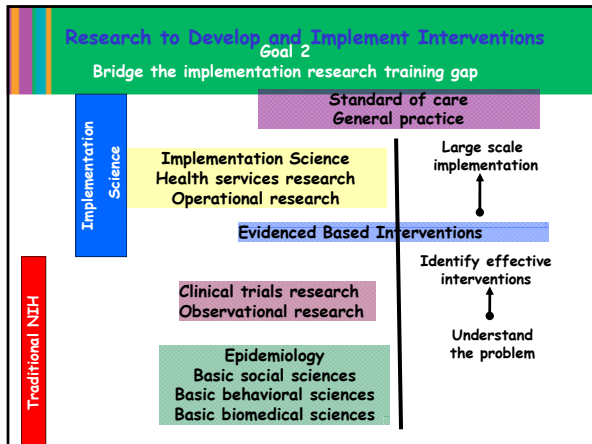
---

---

---

---

---




---

---

---

---

---

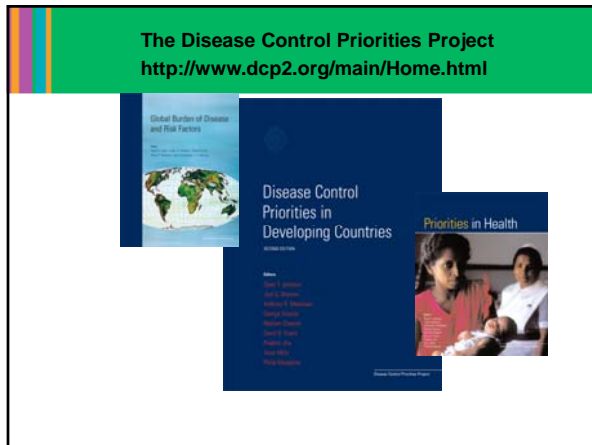
---

---

---

---

---




---

---

---

---

---

---

---

---

---

---




---

---

---

---

---

---

---

---

---

---

**For Future Researchers and Leaders in LMIC**

**Research Training programs (already discussed)**

**Research - GLOBAL HEALTH RESEARCH INITIATIVE PROGRAM FOR NEW FOREIGN INVESTIGATORS (R01)**

- Help overcome a major barrier to returning LMIC scientists
- Continue the investment already made
- Increase the pool of collaborating LMIC researchers
- Work on problems of local concern
- Continue to strengthen the research capacity in the foreign site

---

---

---

---

---

---

---

---

**For Future US Researchers & Leaders**

3-5 yrs (salary, some research expenses, incl travel)

**International Research Scientist Development Award (IRSDA) K01**

- junior U.S. scientists (within 7 yrs of training)
- to pursue careers in research on global health & prepare them for independent research careers.

**Independent Scientist in Global Health (ISGH) K02**

- tenure-track faculty without research awards
- tenured faculty with independent NIH research awards
- non-tenured faculty with independent NIH research awards



---

---

---

---

---

---

---

---

**For Both US & LMIC Future Researchers & Leaders**

**Fogarty International Clinical Research Scholars & Fellows**

- Builds research collaborations
- Provides mentored one-yr clinical research opportunities
- Scholars: Pair US with LMIC

• [http://www.fic.nih.gov/programs/training\\_grants/nih\\_fogarty.htm](http://www.fic.nih.gov/programs/training_grants/nih_fogarty.htm)



---

---

---

---

---

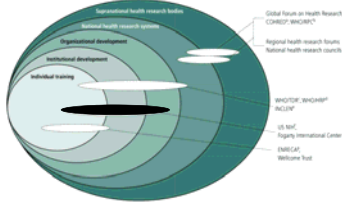
---

---

---

**Goal 4**  
Foster a sustainable research environment in low- and middle-income countries

Fig 1 Examples of efforts to build research capacity, ranging from individual to global movements



<sup>1</sup> Centers for Health Research Development  
<sup>2</sup> National Health Department of Mexico, Peru and Guatemala  
<sup>3</sup> WHO/CHEP Special Programs for Research and Training in Tropical Diseases  
<sup>4</sup> National Science Foundation of Research, Development and Innovation Training of Reproductive Health  
<sup>5</sup> Fogarty International Center of Systematic Reviews  
<sup>6</sup> US NIH National Institutes of Health (NIH)  
<sup>7</sup> Fogarty International Center of Systematic Reviews  
<sup>8</sup> Fogarty International Center of Systematic Reviews

---

---

---

---

---

---

---

---

---

---

---

---

**Sustainable Research Environment**

- International Research Ethics Education And Curriculum Development Award – “Experts”
- Informatics for Global Health
- Direct awards to foreign sites
- Medical Education Partnership Initiative (MEPI)- support to strengthen clinical and research capacity of medical education in African institutions

---

---

---

---

---

---

---

---

---

---

---

---

**Goal 5**  
Build strategic alliances and funding partnerships in global health research & training

- Trans-NIH Global Health Committee
- Obama Administration Global Health Initiative
- Partnerships –MEPI 10 NIH I/C/O and 6 other USG

---

---

---

---

---

---

---

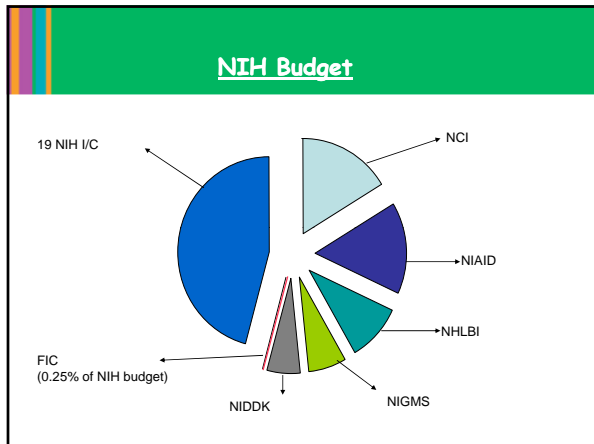
---

---

---

---

---




---

---

---

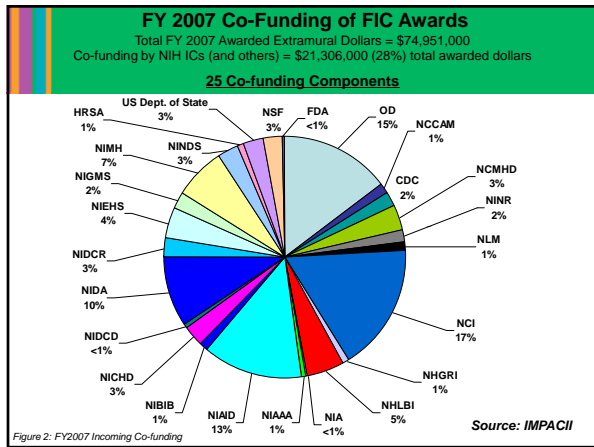
---

---

---

---

---




---

---

---

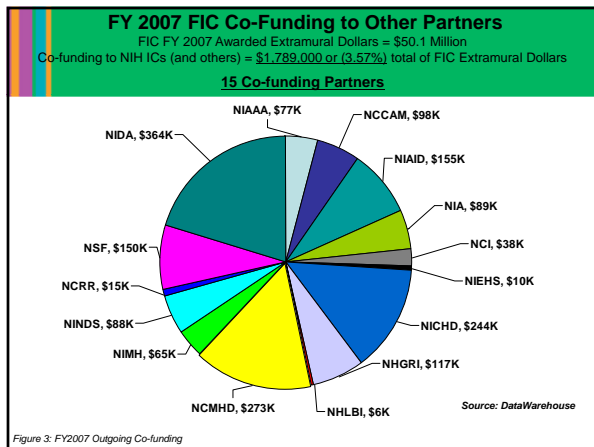
---

---

---

---

---




---

---

---

---

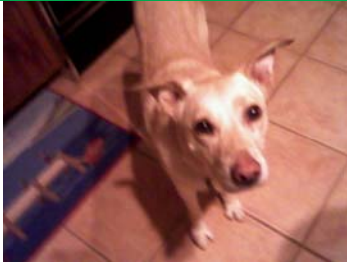
---

---

---

---

## Questions?



FIC Web Site: [WWW.FIC.NIH.GOV](http://WWW.FIC.NIH.GOV)

---

---

---

---

---

---

---

---