

# ATTACHMENT J.1.4

## DRAWINGS

**FLOOR PLAN LEGEND**

- CONCRETE WALL/DOOR/LIMITS
- BRICK
- GIRD OR HEAVY STUD
- WOOD OR METAL STUD PARTIAL HEIGHT
- WOOD OR METAL STUD FULL HEIGHT
- FAST WALL (TO BE MAINT)
- AREA EXCLUDED FROM SCOPE OF WORK
- PLAN CODED KEYNOTE
- WALL TYPE KEYNOTE
- GLAZING TYPE KEYNOTE

**FLOOR PLAN KEYNOTES**

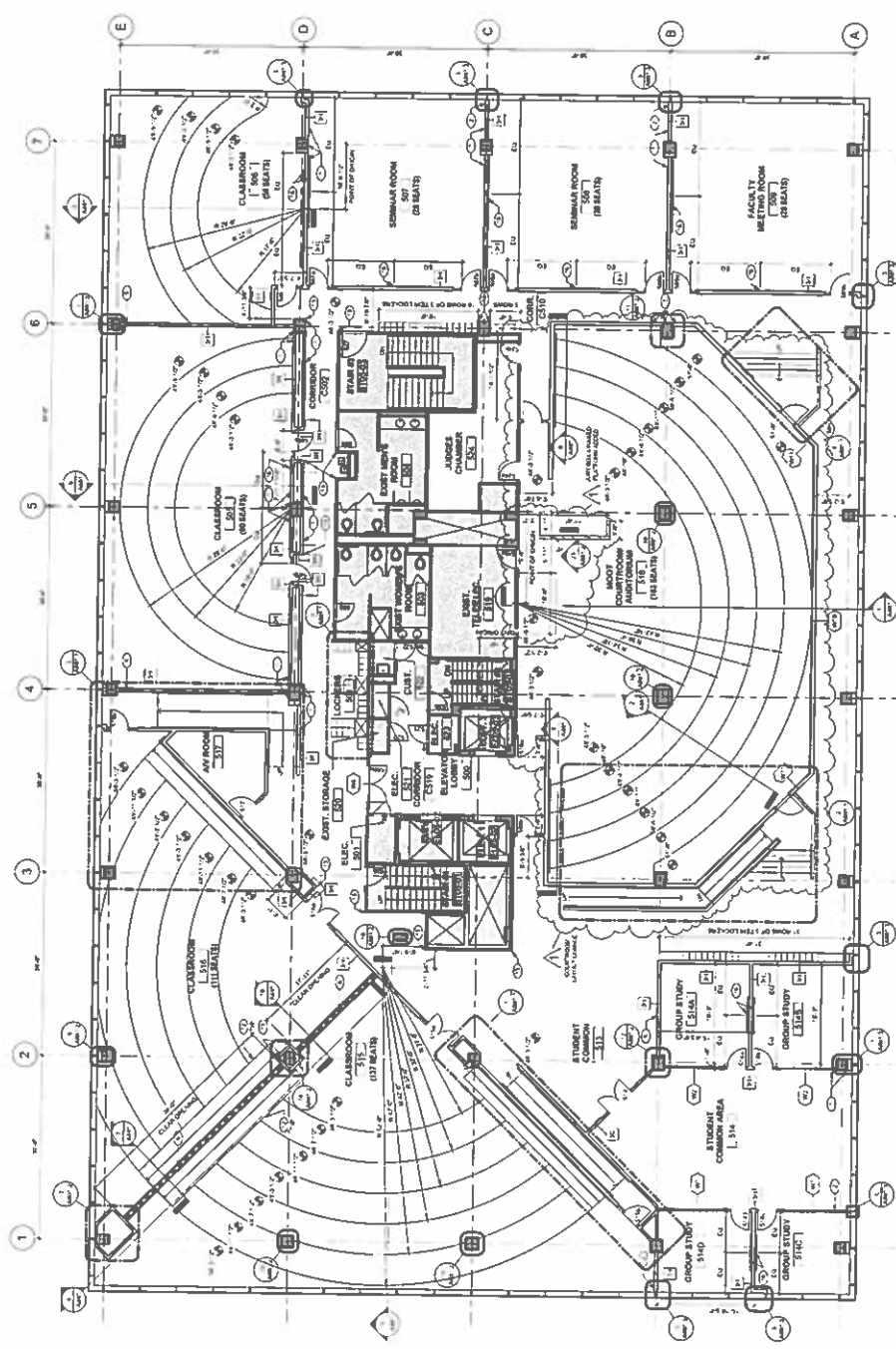
- 1. SEE SHEET A.101
- 2. SEE SHEET A.102
- 3. SEE SHEET A.103
- 4. SEE SHEET A.104
- 5. SEE SHEET A.105
- 6. SEE SHEET A.106
- 7. SEE SHEET A.107
- 8. SEE SHEET A.108
- 9. SEE SHEET A.109
- 10. SEE SHEET A.110
- 11. SEE SHEET A.111
- 12. SEE SHEET A.112
- 13. SEE SHEET A.113
- 14. SEE SHEET A.114
- 15. SEE SHEET A.115
- 16. SEE SHEET A.116
- 17. SEE SHEET A.117
- 18. SEE SHEET A.118
- 19. SEE SHEET A.119
- 20. SEE SHEET A.120
- 21. SEE SHEET A.121
- 22. SEE SHEET A.122
- 23. SEE SHEET A.123
- 24. SEE SHEET A.124
- 25. SEE SHEET A.125
- 26. SEE SHEET A.126
- 27. SEE SHEET A.127
- 28. SEE SHEET A.128
- 29. SEE SHEET A.129
- 30. SEE SHEET A.130
- 31. SEE SHEET A.131
- 32. SEE SHEET A.132
- 33. SEE SHEET A.133
- 34. SEE SHEET A.134
- 35. SEE SHEET A.135
- 36. SEE SHEET A.136
- 37. SEE SHEET A.137
- 38. SEE SHEET A.138
- 39. SEE SHEET A.139
- 40. SEE SHEET A.140
- 41. SEE SHEET A.141
- 42. SEE SHEET A.142
- 43. SEE SHEET A.143
- 44. SEE SHEET A.144
- 45. SEE SHEET A.145
- 46. SEE SHEET A.146
- 47. SEE SHEET A.147
- 48. SEE SHEET A.148
- 49. SEE SHEET A.149
- 50. SEE SHEET A.150
- 51. SEE SHEET A.151
- 52. SEE SHEET A.152
- 53. SEE SHEET A.153
- 54. SEE SHEET A.154
- 55. SEE SHEET A.155
- 56. SEE SHEET A.156
- 57. SEE SHEET A.157
- 58. SEE SHEET A.158
- 59. SEE SHEET A.159
- 60. SEE SHEET A.160
- 61. SEE SHEET A.161
- 62. SEE SHEET A.162
- 63. SEE SHEET A.163
- 64. SEE SHEET A.164
- 65. SEE SHEET A.165
- 66. SEE SHEET A.166
- 67. SEE SHEET A.167
- 68. SEE SHEET A.168
- 69. SEE SHEET A.169
- 70. SEE SHEET A.170
- 71. SEE SHEET A.171
- 72. SEE SHEET A.172
- 73. SEE SHEET A.173
- 74. SEE SHEET A.174
- 75. SEE SHEET A.175
- 76. SEE SHEET A.176
- 77. SEE SHEET A.177
- 78. SEE SHEET A.178
- 79. SEE SHEET A.179
- 80. SEE SHEET A.180
- 81. SEE SHEET A.181
- 82. SEE SHEET A.182
- 83. SEE SHEET A.183
- 84. SEE SHEET A.184
- 85. SEE SHEET A.185
- 86. SEE SHEET A.186
- 87. SEE SHEET A.187
- 88. SEE SHEET A.188
- 89. SEE SHEET A.189
- 90. SEE SHEET A.190
- 91. SEE SHEET A.191
- 92. SEE SHEET A.192
- 93. SEE SHEET A.193
- 94. SEE SHEET A.194
- 95. SEE SHEET A.195
- 96. SEE SHEET A.196
- 97. SEE SHEET A.197
- 98. SEE SHEET A.198
- 99. SEE SHEET A.199
- 100. SEE SHEET A.200

**General Notes**

- 1. SEE SHEET A.101
- 2. SEE SHEET A.102
- 3. SEE SHEET A.103
- 4. SEE SHEET A.104
- 5. SEE SHEET A.105
- 6. SEE SHEET A.106
- 7. SEE SHEET A.107
- 8. SEE SHEET A.108
- 9. SEE SHEET A.109
- 10. SEE SHEET A.110
- 11. SEE SHEET A.111
- 12. SEE SHEET A.112
- 13. SEE SHEET A.113
- 14. SEE SHEET A.114
- 15. SEE SHEET A.115
- 16. SEE SHEET A.116
- 17. SEE SHEET A.117
- 18. SEE SHEET A.118
- 19. SEE SHEET A.119
- 20. SEE SHEET A.120
- 21. SEE SHEET A.121
- 22. SEE SHEET A.122
- 23. SEE SHEET A.123
- 24. SEE SHEET A.124
- 25. SEE SHEET A.125
- 26. SEE SHEET A.126
- 27. SEE SHEET A.127
- 28. SEE SHEET A.128
- 29. SEE SHEET A.129
- 30. SEE SHEET A.130
- 31. SEE SHEET A.131
- 32. SEE SHEET A.132
- 33. SEE SHEET A.133
- 34. SEE SHEET A.134
- 35. SEE SHEET A.135
- 36. SEE SHEET A.136
- 37. SEE SHEET A.137
- 38. SEE SHEET A.138
- 39. SEE SHEET A.139
- 40. SEE SHEET A.140
- 41. SEE SHEET A.141
- 42. SEE SHEET A.142
- 43. SEE SHEET A.143
- 44. SEE SHEET A.144
- 45. SEE SHEET A.145
- 46. SEE SHEET A.146
- 47. SEE SHEET A.147
- 48. SEE SHEET A.148
- 49. SEE SHEET A.149
- 50. SEE SHEET A.150
- 51. SEE SHEET A.151
- 52. SEE SHEET A.152
- 53. SEE SHEET A.153
- 54. SEE SHEET A.154
- 55. SEE SHEET A.155
- 56. SEE SHEET A.156
- 57. SEE SHEET A.157
- 58. SEE SHEET A.158
- 59. SEE SHEET A.159
- 60. SEE SHEET A.160
- 61. SEE SHEET A.161
- 62. SEE SHEET A.162
- 63. SEE SHEET A.163
- 64. SEE SHEET A.164
- 65. SEE SHEET A.165
- 66. SEE SHEET A.166
- 67. SEE SHEET A.167
- 68. SEE SHEET A.168
- 69. SEE SHEET A.169
- 70. SEE SHEET A.170
- 71. SEE SHEET A.171
- 72. SEE SHEET A.172
- 73. SEE SHEET A.173
- 74. SEE SHEET A.174
- 75. SEE SHEET A.175
- 76. SEE SHEET A.176
- 77. SEE SHEET A.177
- 78. SEE SHEET A.178
- 79. SEE SHEET A.179
- 80. SEE SHEET A.180
- 81. SEE SHEET A.181
- 82. SEE SHEET A.182
- 83. SEE SHEET A.183
- 84. SEE SHEET A.184
- 85. SEE SHEET A.185
- 86. SEE SHEET A.186
- 87. SEE SHEET A.187
- 88. SEE SHEET A.188
- 89. SEE SHEET A.189
- 90. SEE SHEET A.190
- 91. SEE SHEET A.191
- 92. SEE SHEET A.192
- 93. SEE SHEET A.193
- 94. SEE SHEET A.194
- 95. SEE SHEET A.195
- 96. SEE SHEET A.196
- 97. SEE SHEET A.197
- 98. SEE SHEET A.198
- 99. SEE SHEET A.199
- 100. SEE SHEET A.200

**DAVID A. CLARKE SCHOOL OF LAW**  
 DISTRICT OF COLUMBIA  
 DISTRICT OF COLUMBIA  
**MOODY-NOLAN**  
 responsive architecture  
 420 Wisconsin Ave. NW  
 Washington, DC 20004  
 Phone: 202.224.4444  
 Fax: 202.224.4444  
 www.moody-nolan.com

Project: 11527.01  
 Date: 11/15/11  
 Scale: 1/8" = 1'-0"  
 Title: 5th Floor Plan  
 Phase: PHASE ONE



**1 FIFTH FLOOR PLAN**  
 1/8" = 1'-0"

**REFLECTED CEILING PLAN LEGEND**

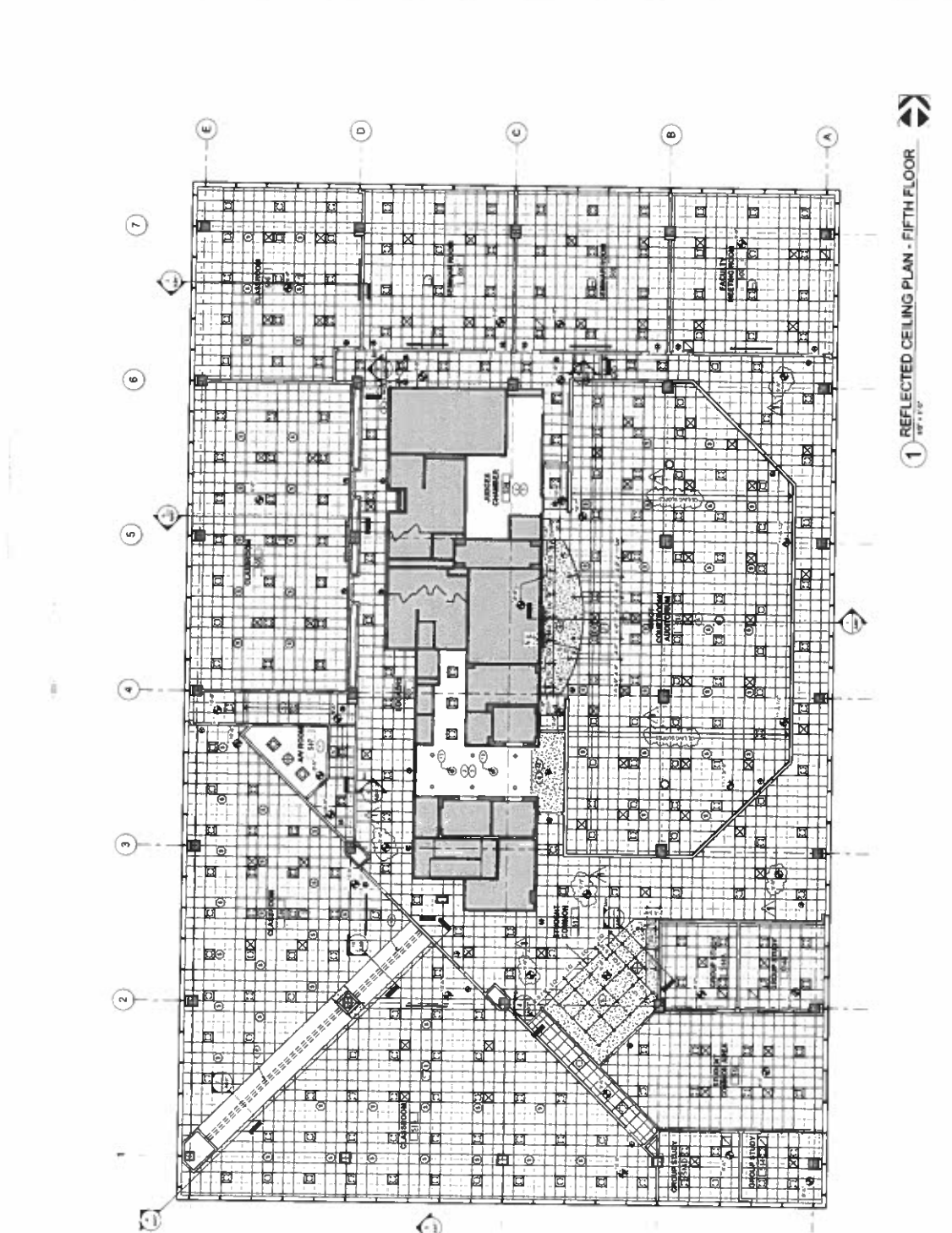
	4x4x4 GRID
	2x2x2 GRID
	1x1x1 GRID
	6x6x6 GRID
	8x8x8 GRID
	12x12x12 GRID
	16x16x16 GRID
	20x20x20 GRID
	24x24x24 GRID
	30x30x30 GRID
	36x36x36 GRID
	42x42x42 GRID
	48x48x48 GRID
	54x54x54 GRID
	60x60x60 GRID
	66x66x66 GRID
	72x72x72 GRID
	78x78x78 GRID
	84x84x84 GRID
	90x90x90 GRID
	96x96x96 GRID
	102x102x102 GRID
	108x108x108 GRID
	114x114x114 GRID
	120x120x120 GRID
	126x126x126 GRID
	132x132x132 GRID
	138x138x138 GRID
	144x144x144 GRID
	150x150x150 GRID
	156x156x156 GRID
	162x162x162 GRID
	168x168x168 GRID
	174x174x174 GRID
	180x180x180 GRID
	186x186x186 GRID
	192x192x192 GRID

**REFLECTED CEILING PLAN NOTES**

1. ALL REFLECTED CEILING PLAN NOTES SHALL BE IN ACCORDANCE WITH THE 2003 INTERNATIONAL BUILDING CODE (IBC).
2. ALL REFLECTED CEILING PLAN NOTES SHALL BE IN ACCORDANCE WITH THE 2003 INTERNATIONAL MECHANICAL AND PLUMBING CODE (IMC).
3. ALL REFLECTED CEILING PLAN NOTES SHALL BE IN ACCORDANCE WITH THE 2003 INTERNATIONAL FIRE AND SAFETY CODE (IFSC).
4. ALL REFLECTED CEILING PLAN NOTES SHALL BE IN ACCORDANCE WITH THE 2003 INTERNATIONAL ENERGY CONSERVATION CODE (IECC).
5. ALL REFLECTED CEILING PLAN NOTES SHALL BE IN ACCORDANCE WITH THE 2003 INTERNATIONAL SMOKE CONTROL CODE (ISCC).
6. ALL REFLECTED CEILING PLAN NOTES SHALL BE IN ACCORDANCE WITH THE 2003 INTERNATIONAL SOUND CONTROL CODE (ISCC).
7. ALL REFLECTED CEILING PLAN NOTES SHALL BE IN ACCORDANCE WITH THE 2003 INTERNATIONAL VIBRATION CONTROL CODE (IVCC).
8. ALL REFLECTED CEILING PLAN NOTES SHALL BE IN ACCORDANCE WITH THE 2003 INTERNATIONAL LIGHTING CODE (ILC).
9. ALL REFLECTED CEILING PLAN NOTES SHALL BE IN ACCORDANCE WITH THE 2003 INTERNATIONAL ELECTRICAL CODE (IEC).
10. ALL REFLECTED CEILING PLAN NOTES SHALL BE IN ACCORDANCE WITH THE 2003 INTERNATIONAL TELECOMMUNICATIONS CODE (ITC).
11. ALL REFLECTED CEILING PLAN NOTES SHALL BE IN ACCORDANCE WITH THE 2003 INTERNATIONAL RADIATION CONTROL CODE (IRCC).
12. ALL REFLECTED CEILING PLAN NOTES SHALL BE IN ACCORDANCE WITH THE 2003 INTERNATIONAL ACoustics CODE (IAC).
13. ALL REFLECTED CEILING PLAN NOTES SHALL BE IN ACCORDANCE WITH THE 2003 INTERNATIONAL AIR QUALITY CODE (IAQC).
14. ALL REFLECTED CEILING PLAN NOTES SHALL BE IN ACCORDANCE WITH THE 2003 INTERNATIONAL ASBESTOS ABATEMENT CODE (IAAC).
15. ALL REFLECTED CEILING PLAN NOTES SHALL BE IN ACCORDANCE WITH THE 2003 INTERNATIONAL LEAD ABATEMENT CODE (IALAC).
16. ALL REFLECTED CEILING PLAN NOTES SHALL BE IN ACCORDANCE WITH THE 2003 INTERNATIONAL MOLD ABATEMENT CODE (IAMAC).
17. ALL REFLECTED CEILING PLAN NOTES SHALL BE IN ACCORDANCE WITH THE 2003 INTERNATIONAL RADON ABATEMENT CODE (IRAC).
18. ALL REFLECTED CEILING PLAN NOTES SHALL BE IN ACCORDANCE WITH THE 2003 INTERNATIONAL AIR POLLUTION CONTROL CODE (IAPCC).
19. ALL REFLECTED CEILING PLAN NOTES SHALL BE IN ACCORDANCE WITH THE 2003 INTERNATIONAL OZONE ABATEMENT CODE (IOAC).
20. ALL REFLECTED CEILING PLAN NOTES SHALL BE IN ACCORDANCE WITH THE 2003 INTERNATIONAL GREEN BUILDING CODE (IGBC).
21. ALL REFLECTED CEILING PLAN NOTES SHALL BE IN ACCORDANCE WITH THE 2003 INTERNATIONAL WELL-BEING CODE (IWC).
22. ALL REFLECTED CEILING PLAN NOTES SHALL BE IN ACCORDANCE WITH THE 2003 INTERNATIONAL SUSTAINABLE BUILDING CODE (ISBC).
23. ALL REFLECTED CEILING PLAN NOTES SHALL BE IN ACCORDANCE WITH THE 2003 INTERNATIONAL RESILIENT BUILDING CODE (IRBC).
24. ALL REFLECTED CEILING PLAN NOTES SHALL BE IN ACCORDANCE WITH THE 2003 INTERNATIONAL FLOOD RESISTANT BUILDING CODE (IFRBC).
25. ALL REFLECTED CEILING PLAN NOTES SHALL BE IN ACCORDANCE WITH THE 2003 INTERNATIONAL TERRORISM RESISTANT BUILDING CODE (ITRBC).
26. ALL REFLECTED CEILING PLAN NOTES SHALL BE IN ACCORDANCE WITH THE 2003 INTERNATIONAL CYBER RESISTANT BUILDING CODE (ICRBC).
27. ALL REFLECTED CEILING PLAN NOTES SHALL BE IN ACCORDANCE WITH THE 2003 INTERNATIONAL BIOTERRORISM RESISTANT BUILDING CODE (IBTRBC).
28. ALL REFLECTED CEILING PLAN NOTES SHALL BE IN ACCORDANCE WITH THE 2003 INTERNATIONAL CHEMICAL RESISTANT BUILDING CODE (ICRBC).
29. ALL REFLECTED CEILING PLAN NOTES SHALL BE IN ACCORDANCE WITH THE 2003 INTERNATIONAL BIOLOGICAL RESISTANT BUILDING CODE (IBRBC).
30. ALL REFLECTED CEILING PLAN NOTES SHALL BE IN ACCORDANCE WITH THE 2003 INTERNATIONAL NUCLEAR RESISTANT BUILDING CODE (INRBC).
31. ALL REFLECTED CEILING PLAN NOTES SHALL BE IN ACCORDANCE WITH THE 2003 INTERNATIONAL SPACE RESISTANT BUILDING CODE (ISRBC).
32. ALL REFLECTED CEILING PLAN NOTES SHALL BE IN ACCORDANCE WITH THE 2003 INTERNATIONAL TIME RESISTANT BUILDING CODE (ITRBC).
33. ALL REFLECTED CEILING PLAN NOTES SHALL BE IN ACCORDANCE WITH THE 2003 INTERNATIONAL WEATHER RESISTANT BUILDING CODE (IWRBC).
34. ALL REFLECTED CEILING PLAN NOTES SHALL BE IN ACCORDANCE WITH THE 2003 INTERNATIONAL CLIMATE RESISTANT BUILDING CODE (ICRBC).
35. ALL REFLECTED CEILING PLAN NOTES SHALL BE IN ACCORDANCE WITH THE 2003 INTERNATIONAL DISASTER RESISTANT BUILDING CODE (IDRBC).
36. ALL REFLECTED CEILING PLAN NOTES SHALL BE IN ACCORDANCE WITH THE 2003 INTERNATIONAL CRISIS RESISTANT BUILDING CODE (ICRBC).
37. ALL REFLECTED CEILING PLAN NOTES SHALL BE IN ACCORDANCE WITH THE 2003 INTERNATIONAL RECOVERY RESISTANT BUILDING CODE (IRRBC).
38. ALL REFLECTED CEILING PLAN NOTES SHALL BE IN ACCORDANCE WITH THE 2003 INTERNATIONAL RESILIENT RECOVERY RESISTANT BUILDING CODE (IRRRBC).
39. ALL REFLECTED CEILING PLAN NOTES SHALL BE IN ACCORDANCE WITH THE 2003 INTERNATIONAL SUSTAINABLE RECOVERY RESISTANT BUILDING CODE (ISRRBC).
40. ALL REFLECTED CEILING PLAN NOTES SHALL BE IN ACCORDANCE WITH THE 2003 INTERNATIONAL WELL-BEING RECOVERY RESISTANT BUILDING CODE (IWRBC).
41. ALL REFLECTED CEILING PLAN NOTES SHALL BE IN ACCORDANCE WITH THE 2003 INTERNATIONAL SUSTAINABLE WELL-BEING RECOVERY RESISTANT BUILDING CODE (ISWRBC).
42. ALL REFLECTED CEILING PLAN NOTES SHALL BE IN ACCORDANCE WITH THE 2003 INTERNATIONAL RESILIENT WELL-BEING RECOVERY RESISTANT BUILDING CODE (IRWRBC).
43. ALL REFLECTED CEILING PLAN NOTES SHALL BE IN ACCORDANCE WITH THE 2003 INTERNATIONAL SUSTAINABLE RESILIENT WELL-BEING RECOVERY RESISTANT BUILDING CODE (ISRWBC).
44. ALL REFLECTED CEILING PLAN NOTES SHALL BE IN ACCORDANCE WITH THE 2003 INTERNATIONAL WELL-BEING SUSTAINABLE RESILIENT RECOVERY RESISTANT BUILDING CODE (IWSRRBC).
45. ALL REFLECTED CEILING PLAN NOTES SHALL BE IN ACCORDANCE WITH THE 2003 INTERNATIONAL SUSTAINABLE WELL-BEING SUSTAINABLE RESILIENT RECOVERY RESISTANT BUILDING CODE (ISWSRRBC).
46. ALL REFLECTED CEILING PLAN NOTES SHALL BE IN ACCORDANCE WITH THE 2003 INTERNATIONAL RESILIENT SUSTAINABLE WELL-BEING SUSTAINABLE RESILIENT RECOVERY RESISTANT BUILDING CODE (IRWSRRBC).
47. ALL REFLECTED CEILING PLAN NOTES SHALL BE IN ACCORDANCE WITH THE 2003 INTERNATIONAL SUSTAINABLE RESILIENT SUSTAINABLE WELL-BEING SUSTAINABLE RESILIENT RECOVERY RESISTANT BUILDING CODE (ISRSWRBC).
48. ALL REFLECTED CEILING PLAN NOTES SHALL BE IN ACCORDANCE WITH THE 2003 INTERNATIONAL WELL-BEING RESILIENT SUSTAINABLE WELL-BEING SUSTAINABLE RESILIENT RECOVERY RESISTANT BUILDING CODE (IWRSRBC).
49. ALL REFLECTED CEILING PLAN NOTES SHALL BE IN ACCORDANCE WITH THE 2003 INTERNATIONAL SUSTAINABLE WELL-BEING RESILIENT SUSTAINABLE WELL-BEING SUSTAINABLE RESILIENT RECOVERY RESISTANT BUILDING CODE (ISWRSRBC).
50. ALL REFLECTED CEILING PLAN NOTES SHALL BE IN ACCORDANCE WITH THE 2003 INTERNATIONAL RESILIENT WELL-BEING RESILIENT SUSTAINABLE WELL-BEING SUSTAINABLE RESILIENT RECOVERY RESISTANT BUILDING CODE (IRWRSRBC).

**General Notes**

1. ALL GENERAL NOTES SHALL BE IN ACCORDANCE WITH THE 2003 INTERNATIONAL BUILDING CODE (IBC).
2. ALL GENERAL NOTES SHALL BE IN ACCORDANCE WITH THE 2003 INTERNATIONAL MECHANICAL AND PLUMBING CODE (IMC).
3. ALL GENERAL NOTES SHALL BE IN ACCORDANCE WITH THE 2003 INTERNATIONAL FIRE AND SAFETY CODE (IFSC).
4. ALL GENERAL NOTES SHALL BE IN ACCORDANCE WITH THE 2003 INTERNATIONAL ENERGY CONSERVATION CODE (IECC).
5. ALL GENERAL NOTES SHALL BE IN ACCORDANCE WITH THE 2003 INTERNATIONAL SMOKE CONTROL CODE (ISCC).
6. ALL GENERAL NOTES SHALL BE IN ACCORDANCE WITH THE 2003 INTERNATIONAL SOUND CONTROL CODE (ISCC).
7. ALL GENERAL NOTES SHALL BE IN ACCORDANCE WITH THE 2003 INTERNATIONAL VIBRATION CONTROL CODE (IVCC).
8. ALL GENERAL NOTES SHALL BE IN ACCORDANCE WITH THE 2003 INTERNATIONAL LIGHTING CODE (ILC).
9. ALL GENERAL NOTES SHALL BE IN ACCORDANCE WITH THE 2003 INTERNATIONAL ELECTRICAL CODE (IEC).
10. ALL GENERAL NOTES SHALL BE IN ACCORDANCE WITH THE 2003 INTERNATIONAL TELECOMMUNICATIONS CODE (ITC).
11. ALL GENERAL NOTES SHALL BE IN ACCORDANCE WITH THE 2003 INTERNATIONAL RADIATION CONTROL CODE (IRCC).
12. ALL GENERAL NOTES SHALL BE IN ACCORDANCE WITH THE 2003 INTERNATIONAL ACoustics CODE (IAC).
13. ALL GENERAL NOTES SHALL BE IN ACCORDANCE WITH THE 2003 INTERNATIONAL AIR QUALITY CODE (IAQC).
14. ALL GENERAL NOTES SHALL BE IN ACCORDANCE WITH THE 2003 INTERNATIONAL ASBESTOS ABATEMENT CODE (IAAC).
15. ALL GENERAL NOTES SHALL BE IN ACCORDANCE WITH THE 2003 INTERNATIONAL LEAD ABATEMENT CODE (IALAC).
16. ALL GENERAL NOTES SHALL BE IN ACCORDANCE WITH THE 2003 INTERNATIONAL MOLD ABATEMENT CODE (IAMAC).
17. ALL GENERAL NOTES SHALL BE IN ACCORDANCE WITH THE 2003 INTERNATIONAL RADON ABATEMENT CODE (IRAC).
18. ALL GENERAL NOTES SHALL BE IN ACCORDANCE WITH THE 2003 INTERNATIONAL AIR POLLUTION CONTROL CODE (IAPCC).
19. ALL GENERAL NOTES SHALL BE IN ACCORDANCE WITH THE 2003 INTERNATIONAL OZONE ABATEMENT CODE (IOAC).
20. ALL GENERAL NOTES SHALL BE IN ACCORDANCE WITH THE 2003 INTERNATIONAL GREEN BUILDING CODE (IGBC).
21. ALL GENERAL NOTES SHALL BE IN ACCORDANCE WITH THE 2003 INTERNATIONAL WELL-BEING CODE (IWC).
22. ALL GENERAL NOTES SHALL BE IN ACCORDANCE WITH THE 2003 INTERNATIONAL SUSTAINABLE BUILDING CODE (ISBC).
23. ALL GENERAL NOTES SHALL BE IN ACCORDANCE WITH THE 2003 INTERNATIONAL RESILIENT BUILDING CODE (IRBC).
24. ALL GENERAL NOTES SHALL BE IN ACCORDANCE WITH THE 2003 INTERNATIONAL FLOOD RESISTANT BUILDING CODE (IFRBC).
25. ALL GENERAL NOTES SHALL BE IN ACCORDANCE WITH THE 2003 INTERNATIONAL TERRORISM RESISTANT BUILDING CODE (ITRBC).
26. ALL GENERAL NOTES SHALL BE IN ACCORDANCE WITH THE 2003 INTERNATIONAL CYBER RESISTANT BUILDING CODE (ICRBC).
27. ALL GENERAL NOTES SHALL BE IN ACCORDANCE WITH THE 2003 INTERNATIONAL BIOTERRORISM RESISTANT BUILDING CODE (IBTRBC).
28. ALL GENERAL NOTES SHALL BE IN ACCORDANCE WITH THE 2003 INTERNATIONAL CHEMICAL RESISTANT BUILDING CODE (ICRBC).
29. ALL GENERAL NOTES SHALL BE IN ACCORDANCE WITH THE 2003 INTERNATIONAL BIOLOGICAL RESISTANT BUILDING CODE (IBRBC).
30. ALL GENERAL NOTES SHALL BE IN ACCORDANCE WITH THE 2003 INTERNATIONAL NUCLEAR RESISTANT BUILDING CODE (INRBC).
31. ALL GENERAL NOTES SHALL BE IN ACCORDANCE WITH THE 2003 INTERNATIONAL SPACE RESISTANT BUILDING CODE (ISRBC).
32. ALL GENERAL NOTES SHALL BE IN ACCORDANCE WITH THE 2003 INTERNATIONAL TIME RESISTANT BUILDING CODE (ITRBC).
33. ALL GENERAL NOTES SHALL BE IN ACCORDANCE WITH THE 2003 INTERNATIONAL WEATHER RESISTANT BUILDING CODE (IWRBC).
34. ALL GENERAL NOTES SHALL BE IN ACCORDANCE WITH THE 2003 INTERNATIONAL CLIMATE RESISTANT BUILDING CODE (ICRBC).
35. ALL GENERAL NOTES SHALL BE IN ACCORDANCE WITH THE 2003 INTERNATIONAL DISASTER RESISTANT BUILDING CODE (IDRBC).
36. ALL GENERAL NOTES SHALL BE IN ACCORDANCE WITH THE 2003 INTERNATIONAL CRISIS RESISTANT BUILDING CODE (ICRBC).
37. ALL GENERAL NOTES SHALL BE IN ACCORDANCE WITH THE 2003 INTERNATIONAL RECOVERY RESISTANT BUILDING CODE (IRRBC).
38. ALL GENERAL NOTES SHALL BE IN ACCORDANCE WITH THE 2003 INTERNATIONAL RESILIENT RECOVERY RESISTANT BUILDING CODE (IRRRBC).
39. ALL GENERAL NOTES SHALL BE IN ACCORDANCE WITH THE 2003 INTERNATIONAL SUSTAINABLE RECOVERY RESISTANT BUILDING CODE (ISRRBC).
40. ALL GENERAL NOTES SHALL BE IN ACCORDANCE WITH THE 2003 INTERNATIONAL WELL-BEING RECOVERY RESISTANT BUILDING CODE (IWRBC).
41. ALL GENERAL NOTES SHALL BE IN ACCORDANCE WITH THE 2003 INTERNATIONAL SUSTAINABLE WELL-BEING RECOVERY RESISTANT BUILDING CODE (ISWRBC).
42. ALL GENERAL NOTES SHALL BE IN ACCORDANCE WITH THE 2003 INTERNATIONAL RESILIENT WELL-BEING RECOVERY RESISTANT BUILDING CODE (IRWRBC).
43. ALL GENERAL NOTES SHALL BE IN ACCORDANCE WITH THE 2003 INTERNATIONAL SUSTAINABLE RESILIENT WELL-BEING RECOVERY RESISTANT BUILDING CODE (ISRWBC).
44. ALL GENERAL NOTES SHALL BE IN ACCORDANCE WITH THE 2003 INTERNATIONAL WELL-BEING SUSTAINABLE RESILIENT RECOVERY RESISTANT BUILDING CODE (IWSRRBC).
45. ALL GENERAL NOTES SHALL BE IN ACCORDANCE WITH THE 2003 INTERNATIONAL SUSTAINABLE WELL-BEING SUSTAINABLE RESILIENT RECOVERY RESISTANT BUILDING CODE (ISWSRRBC).
46. ALL GENERAL NOTES SHALL BE IN ACCORDANCE WITH THE 2003 INTERNATIONAL RESILIENT SUSTAINABLE WELL-BEING SUSTAINABLE RESILIENT RECOVERY RESISTANT BUILDING CODE (IRWSRRBC).
47. ALL GENERAL NOTES SHALL BE IN ACCORDANCE WITH THE 2003 INTERNATIONAL SUSTAINABLE RESILIENT SUSTAINABLE WELL-BEING SUSTAINABLE RESILIENT RECOVERY RESISTANT BUILDING CODE (ISRSWRBC).
48. ALL GENERAL NOTES SHALL BE IN ACCORDANCE WITH THE 2003 INTERNATIONAL WELL-BEING RESILIENT SUSTAINABLE WELL-BEING SUSTAINABLE RESILIENT RECOVERY RESISTANT BUILDING CODE (IWRSRBC).
49. ALL GENERAL NOTES SHALL BE IN ACCORDANCE WITH THE 2003 INTERNATIONAL SUSTAINABLE WELL-BEING RESILIENT SUSTAINABLE WELL-BEING SUSTAINABLE RESILIENT RECOVERY RESISTANT BUILDING CODE (ISWRSRBC).
50. ALL GENERAL NOTES SHALL BE IN ACCORDANCE WITH THE 2003 INTERNATIONAL RESILIENT WELL-BEING RESILIENT SUSTAINABLE WELL-BEING SUSTAINABLE RESILIENT RECOVERY RESISTANT BUILDING CODE (IRWRSRBC).



**1 REFLECTED CEILING PLAN - FIFTH FLOOR**

**DAVID A. CLARKE SCHOOL OF LAW**  
UNIVERSITY OF THE DISTRICT OF COLUMBIA

11832 01  
**A205**  
Fifth Floor RCP  
PHASE ONE

**MOODY-NOLAN**  
responsive architecture  
1000 17th St NW, Suite 500  
Washington, DC 20036  
Tel: (202) 391-2800  
Fax: (202) 391-2801  
www.moody-nolan.com